

Hi Pace



Variety Benefits

High piece production
Consistent, selective crop
Good fruit quality
Excellent grading range
Very high resistant against CGMMV

Resistancy Key

Cca: *Corynespora cassicola*
Ccu: *Cladosporium cucumerinum*
CGMMV: Cucumber Green Mottle Mosaic Virus

Cultivation System High wire

Season Summer;

Planttype Open; Strong; Selective

Fruitytype Cucumber long

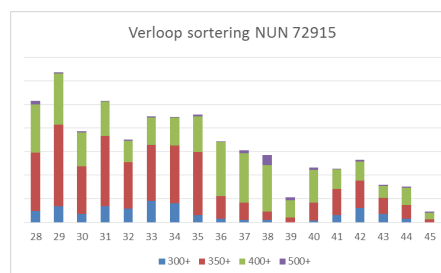
Grading 300+ 8%; 350+ 41%; 400+ 48%; 500+ 3%

High resistant (HR) Cca; Ccu; CGMMV

Plant schedule unlighted

I	II	III	IV	V	VI	VII	VIII	IX	X	XI	XII

*Plant schedule based on current knowledge



For more information:

Rens Muusers, Mobiel: +31 6 1871 9921, E-mail: rens.muusers@vegetableseeds.basf.com

Nunhems Netherlands BV

PO Box 4005

6080 AA Haelen, The Netherlands

Tel: +31 475 599 222

E-mail: nunhems.customerservice.nl@vegetableseeds.basf.com

www.nunhems.co.uk www.nunhems.com

Advices for cultural practice

Information provided by Nunhems in any form whatsoever is without guarantee. Descriptions, recommendations, and illustrations in brochures and leaflets and on the website are based as closely as possible on experiences in tests and in practice. However, Nunhems does not accept any liability whatsoever on the basis of such information for different results in the cultivated product. The buyer itself must determine whether the goods and information are suitable for the intended growth and/or can be used in the local conditions.

Product illustrations

All varieties shown were grown under favorable conditions. Identical results are not guaranteed nor implied for all growing conditions

© Nunhems BV, 2023. All rights, including property rights, are reserved by Nunhems BV or its affiliates on any matter presented or depicted herein.